

first for homes

first for property in life - firstforhomes.co.uk

Contact Allan England's Team

01592 752 944



Alexander Street, Cowdenbeath
Offers over £79,995

Alexander Street, Cowdenbeath

Spacious 2-Bedroom Semi-Detached Villa In Need Of Updating, Situated In The Sought After of Cowdenbeath, Fife! Excellent Investment Opportunity To Add Value!

Allan England's Team at first for homes are proud to present to the market this Spacious 2-Bedroom Semi Detached Villa situated within a sought-after area of Cowdenbeath. This bright and spacious family home which would benefit from some upgrading throughout comprises of: entrance hallway, open plan lounge/diner, kitchen with built in cupboard, stairs to upper level, 2 double bedrooms with built in cupboards and family bathroom. Externally there are front and rear gardens and ample street parking available. Viewing is highly recommended to fully appreciate the potential this fantastic home has to offer.

Home Report Value-£85,000

EPC Rating-C

Council Tax Band-B

Don't miss out, call first for homes - first for trust... first for service... first for aftercare.

Cowdenbeath is situated in Central Fife, just off the A92. It is approximately 6 miles from Dunfermline and has easy access to the Forth Road Bridge via the M90 Motorway. Cowdenbeath boasts its own 18-hole golf course and both primary and secondary schooling are available. As well as excellent road links to Edinburgh and the north, Cowdenbeath has a railway station providing connections around the Country.





SITUATION – Cowdenbeath

ENTRANCE HALLWAY

OPEN PLAN LOUNGE/DINER

19'10" x 10'5" (approx) (6.06m x 3.18m (approx))

KITCHEN 9'2" x 8'9" (approx) (2.81m x 2.67m (approx))

STAIRS TO UPPER LEVEL

BEDROOM 1

12'5" x 10'7" (approx) (3.80m x 3.24m (approx))

BEDROOM 2

10'1" x 8'11" (approx) (3.08m x 2.72m (approx))

FAMILY BATHROOM

6'7" x 5'6" (approx) (2.02m x 1.70m (approx))

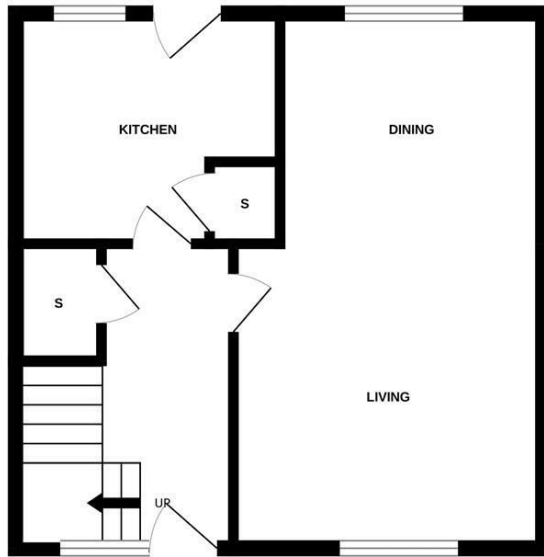
GARDEN GROUNDS

STREET PARKING

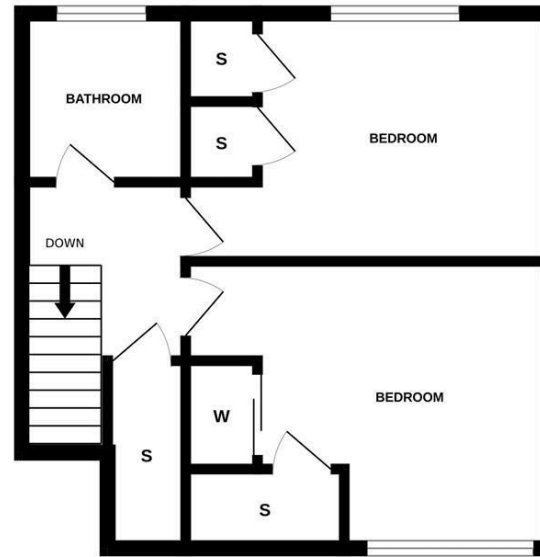
INFORMATION



GROUND FLOOR



1ST FLOOR



Whilst every attempt has been made to ensure the accuracy of the floorplan contained here, measurements of doors, windows, rooms and any other items are approximate and no responsibility is taken for any error, omission or mis-statement. This plan is for illustrative purposes only and should be used as such by any prospective purchaser. The services, systems and appliances shown have not been tested and no guarantee as to their operability or efficiency can be given.
Made with Metropix ©2026

Information

These particulars are prepared on the basis of information provided by our clients. We have not tested the electrical system or any electrical appliances, nor where applicable, any central heating system. All sizes are recorded by electronic tape measurement to give an indicative, approximate size only. Prospective purchasers should make their own enquiries – no warranty is given or implied. This schedule is not intended to, and does not form any contract.

FREE Valuation

Selling Your Home?

Choose first for homes - a highly experienced estate agency team you can trust to sell your home at the highest possible price. Offering fantastic savings on selling fees, with no compromise on service, free professional photography highlighting your home in its best light, first for homes will be your first choice. Contact us today to arrange your appointment.



first for trust



first for service



first for aftercare

first for homes
first for property in life - firstforhomes.co.uk

Contact Allan England's Team
01592 752 944

32 North Street, Glenrothes, Fife KY7 5NA
Fax: 01592 807947
sales@firstforhomes.co.uk
www.firstforhomes.co.uk